



Barriers for climate change adaptation

Roundtable discussion on Indo-European co-operations on
climate research and innovation

Hotel Le Meridien, New Delhi

Nov. 28th 2011

Sanjay Tomar *Ph.D.*

Deutsche Gesellschaft für

Internationale Zusammenarbeit (GIZ) GmbH



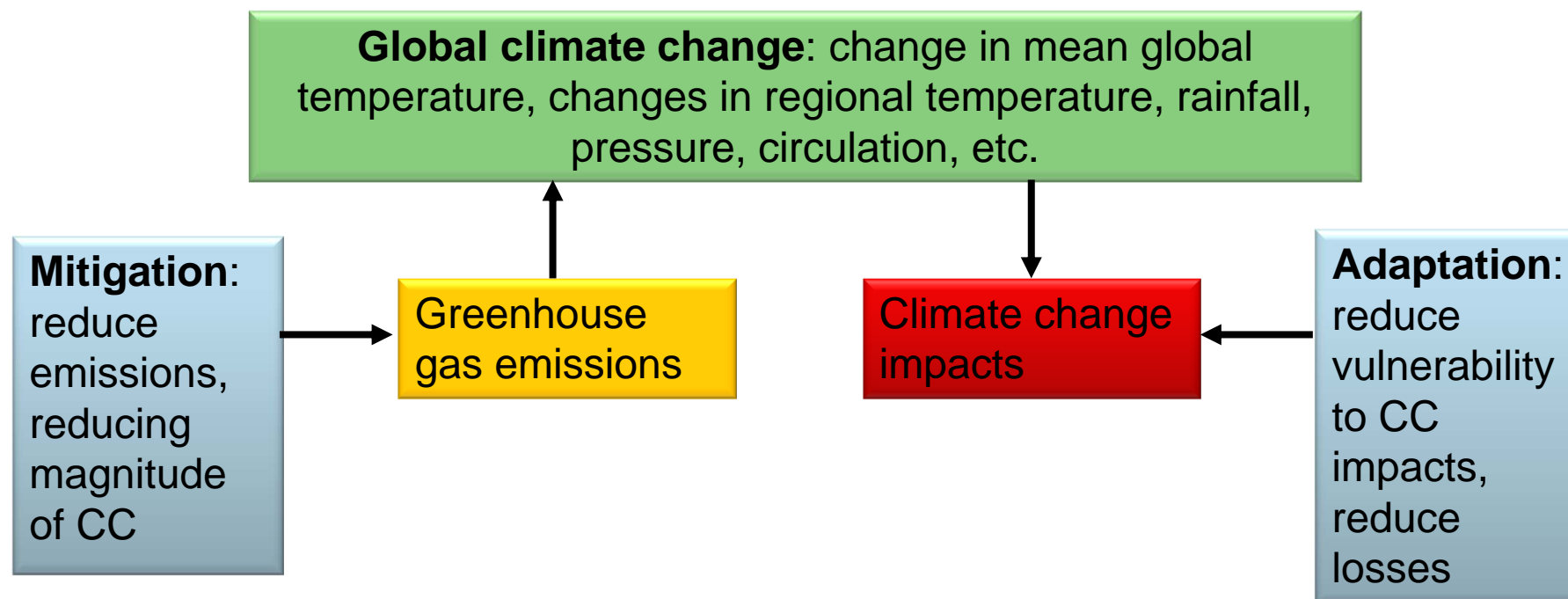
Presentation Outline

- Defining Adaptation
- Process of adaptation
- GIZ tools for addressing barriers for adaptation
- Conclusion



Defining adaptation

Adjustments in human and natural systems, in response to actual or expected climate stimuli or their effects, that moderate harm or exploit beneficial opportunities.



Adaptation and mitigation are complementary strategies

Source: UNDP



Defining barriers to adaptation



→ what do you mean by adaptation to climate change?.....

we adapt to such things since millennia. It's part of our life

Businesses are re-position themselves

Governments change policies and programs to better achieve broad societal goals

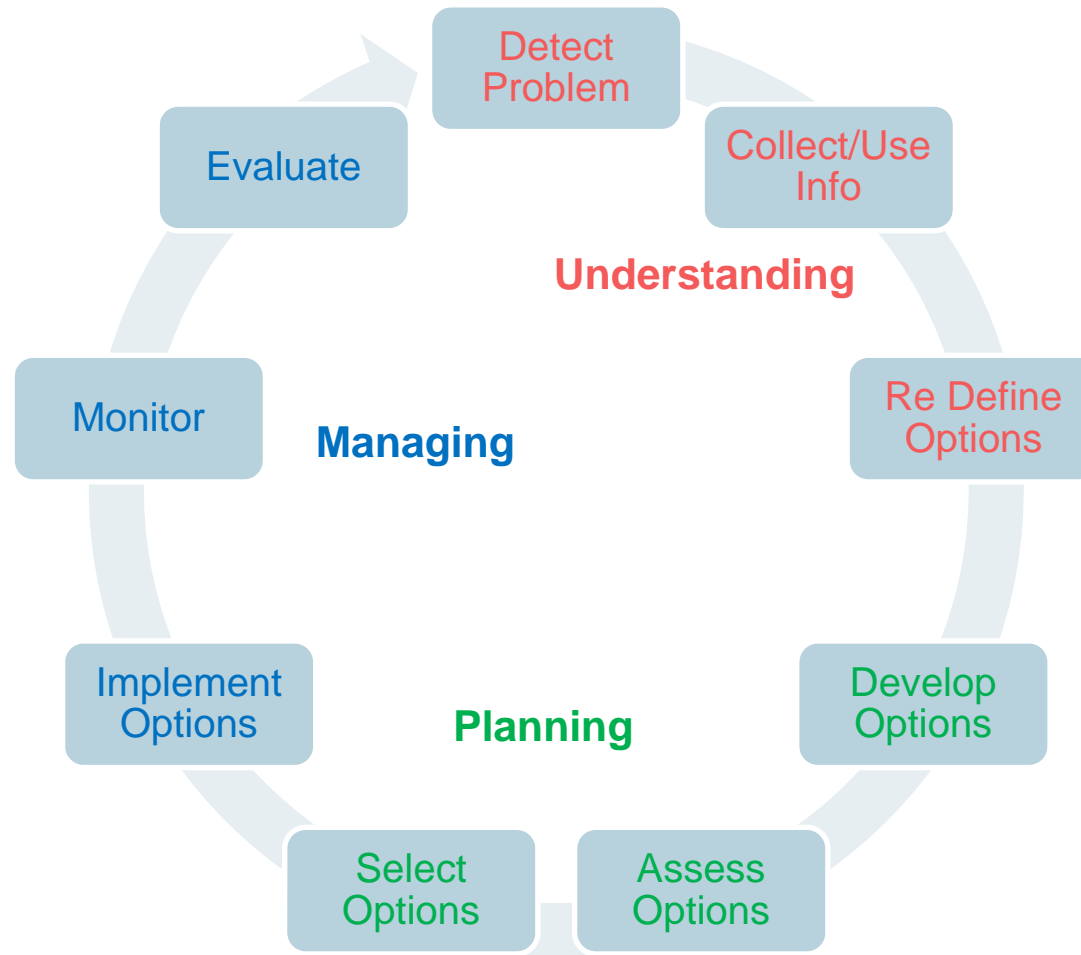
Important decisions are taken all the time – in the absence of complete information

Challenge is to help make adaptation actions more effective in the face of uncertain climate changes

Photo: Höggel



Process of adaptation



Source: Moser and Ekstrom, 2010



GIZ tools for addressing barriers

- Climate Check– Understanding and Planning
- Climate Proofing – Planning and Managing
 - Analysis of politics, programmes, strategies and measures with regard to actual or future climate- related challenges and chances and, if relevant, identification of possible modifications
- Monitoring and Evaluation – Managing

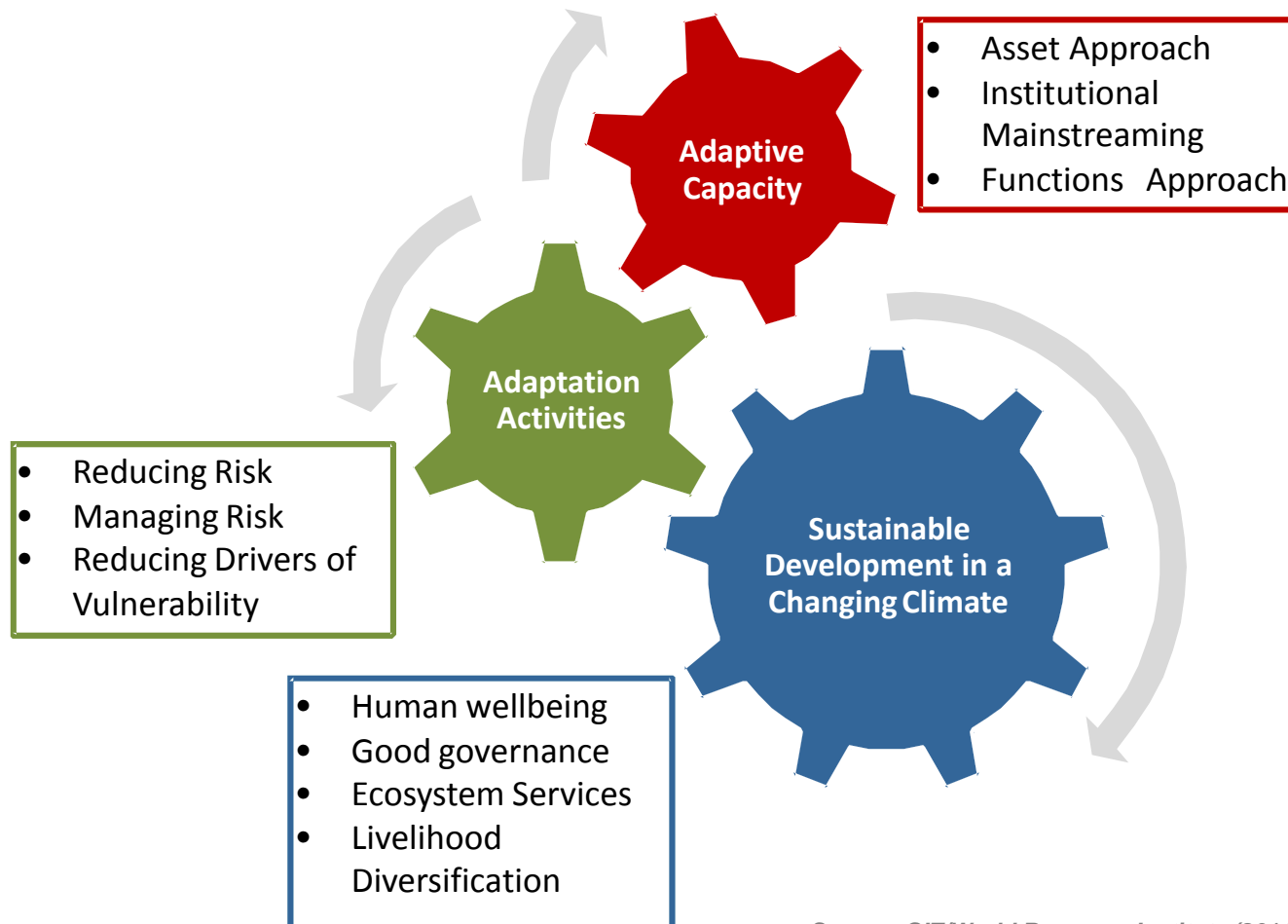


GIZ Climate Proofing for Development

- Methodology originally developed and tested for **GIZ programmes and programmes**
- A **flexible approach** which can be adapted to different circumstances and on four levels: national, sectoral, project, and local
- **Modification for specific contexts** necessary :
 - Political mandate and will
 - Existing institutions, processes and experiences
 - Stakeholders to be involved
 - Cost benefit analysis
 - Time and funding resources



M&E for adaptation



Source: GIZ/World Resources Institute (2011): "Making adaptation count"



Guiding principles for adaptation science

- Relevance
 - Provide information users need

- Credibility
 - Science needs to communicate what we know AND what we do not know

- Legitimacy
 - Transparent and fair



Challenges

- Vulnerability assessment
 - Climate projections for planning?
 - Policy relevant vulnerability assessment?
 - Gathering and interpreting information how to plan for adaptation?
- Research focus of science based policy options
 - Research should be demand driven
- Stakeholders engagement
- Monitoring and evaluation for adaptation
 - How to monitor adaptation projects?



Conclusion

- We can overcome barriers to climate change
 - Leadership
 - Strategic thinking
 - Creativity
 - Multi stakeholder collaborations
 - Effective communication



THANK YOU FOR YOUR ATTENTION !

sanjay.tomar@giz.de

Deutsche Gesellschaft für
Internationale Zusammenarbeit (GIZ) GmbH
Natural Resource Management Programme
B – 5/1 Safdarjung Enclave
New Delhi, 110029, India
Tel: + 91 11 46027617-19
Fax: + 91 11 46027620
Web: www.giz.de/india